

NAME OF OWNERS	AS CONSTITUTED ATTORNEYS OF PARTNER	DATE
PS VINAYAK COMPLEX LLP		
1.	ETAMA REAL ESTATE PVT. LTD.	18.03.2017
2.	SHRI MUKUNDRAJ	
3.	BIDHARTI MURHEREE	
4.	PVT. LTD. COMB N TRAVEL	
5.	PVT. LTD. COMB N TRAVEL	
6.	QUALITON BUILDERS PVT. LTD.	
7.	SHERIL REALTY PVT. LTD.	
8.	ESHAH REAL ESTATE PVT. LTD.	
9.	ESHAH REAL ESTATE PVT. LTD.	
10.	ESHAH REAL ESTATE PVT. LTD.	
11.	ESHAH REAL ESTATE PVT. LTD.	
12.	ESHAH REAL ESTATE PVT. LTD.	
13.	ESHAH REAL ESTATE PVT. LTD.	
14.	ESHAH REAL ESTATE PVT. LTD.	
15.	ESHAH REAL ESTATE PVT. LTD.	
16.	ESHAH REAL ESTATE PVT. LTD.	
17.	ESHAH REAL ESTATE PVT. LTD.	
18.	ESHAH REAL ESTATE PVT. LTD.	
19.	ESHAH REAL ESTATE PVT. LTD.	
20.	ESHAH REAL ESTATE PVT. LTD.	
21.	ESHAH REAL ESTATE PVT. LTD.	
22.	ESHAH REAL ESTATE PVT. LTD.	
23.	ESHAH REAL ESTATE PVT. LTD.	
24.	ESHAH REAL ESTATE PVT. LTD.	
25.	ESHAH REAL ESTATE PVT. LTD.	
26.	ESHAH REAL ESTATE PVT. LTD.	
27.	ESHAH REAL ESTATE PVT. LTD.	
28.	ESHAH REAL ESTATE PVT. LTD.	
29.	ESHAH REAL ESTATE PVT. LTD.	
30.	ESHAH REAL ESTATE PVT. LTD.	
31.	ESHAH REAL ESTATE PVT. LTD.	
32.	ESHAH REAL ESTATE PVT. LTD.	
33.	ESHAH REAL ESTATE PVT. LTD.	
34.	ESHAH REAL ESTATE PVT. LTD.	
35.	ESHAH REAL ESTATE PVT. LTD.	
36.	ESHAH REAL ESTATE PVT. LTD.	
37.	ESHAH REAL ESTATE PVT. LTD.	
38.	ESHAH REAL ESTATE PVT. LTD.	
39.	ESHAH REAL ESTATE PVT. LTD.	
40.	ESHAH REAL ESTATE PVT. LTD.	
41.	ESHAH REAL ESTATE PVT. LTD.	
42.	ESHAH REAL ESTATE PVT. LTD.	
43.	ESHAH REAL ESTATE PVT. LTD.	
44.	ESHAH REAL ESTATE PVT. LTD.	
45.	ESHAH REAL ESTATE PVT. LTD.	

CERTIFICATE OF STRUCTURAL ENGINEER:
 THIS IS TO CERTIFY THAT THE STRUCTURAL DESIGN AND DRAWINGS FOR THE BUILDING AND THE FOUNDATION WORKS HAS BEEN MADE AND CONSIDERING ALL POSSIBLE LOADS INCLUDING THE SEISMIC LOAD AS PER THE SAFE AND STABLE IN ALL RESPECTS. AND CERTIFIED THAT IT IS SAFE.

reem jbs
 SIGNATURE OF OWNER

Upendra Singh
 SIGNATURE OF STRUCTURAL ENGINEER
 B. Sc. (Civil Engineering)
 PUNJAB UNIVERSITY OF ARCHITECTURE AND PLANNING
 H-10, PHASE-2, JALANDHAR, PUNJAB, INDIA.

Megha K. Roy
 SIGNATURE OF ARCHITECT
 B. Sc. (Architecture)
 PUNJAB UNIVERSITY OF ARCHITECTURE AND PLANNING
 H-10, PHASE-2, JALANDHAR, PUNJAB, INDIA.

Anishan Raju
 SIGNATURE OF ARCHITECT

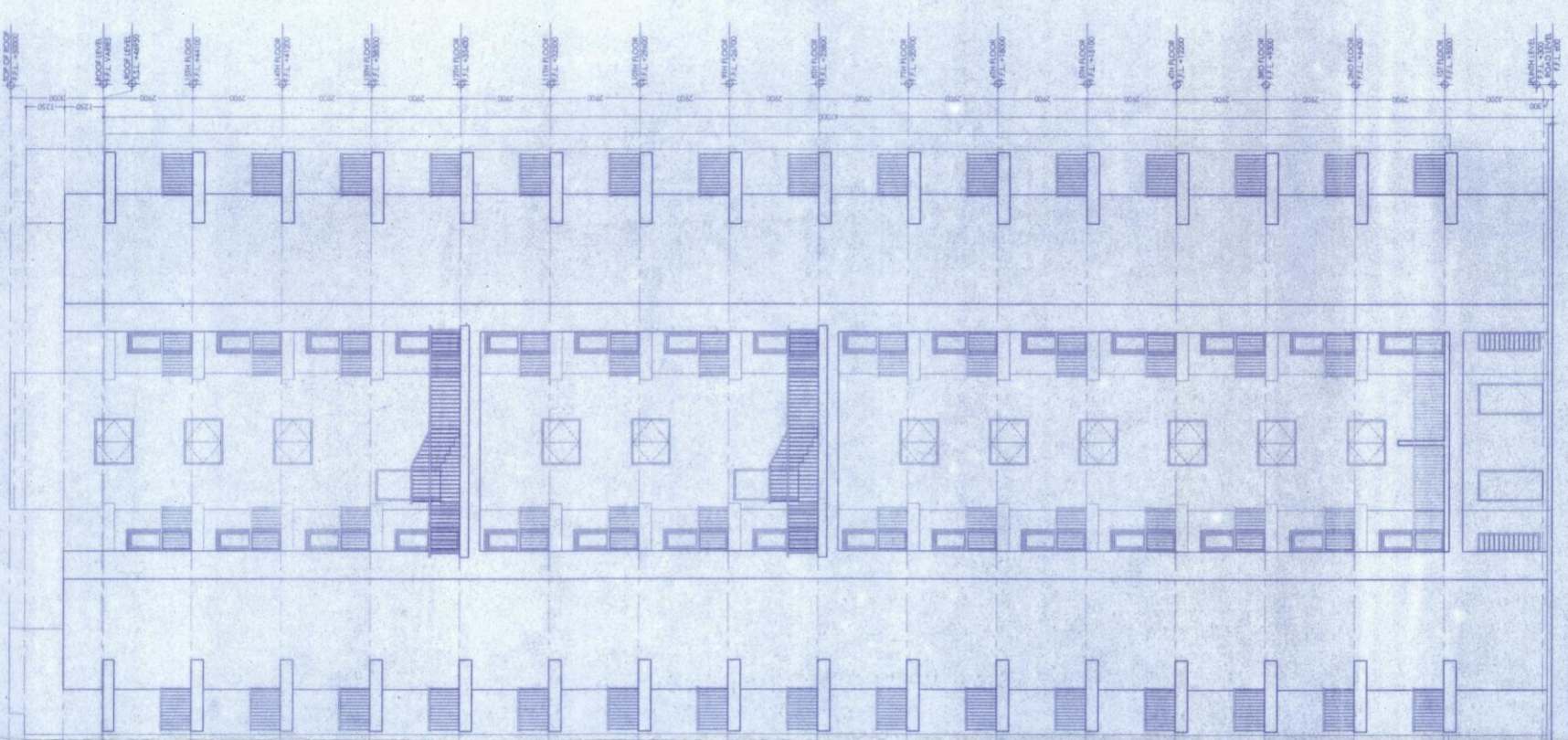
PROJECT:
 PS VINAYAK COMPLEX - ONE NO. G+11 STORED (TOWER-I) ONE TOWER TO TOWER-II (G+11) STORED UNDER GROUP RESIDENTIAL BUILDING WITH 5 LAYERS POOLUM PARKING OVER COMMON BASEMENT AT D. H. NO. 331 B.I. R.S. DAG NOS. 115, 116 & 117 CORRESPONDING TO L.R. DAG NOS. 114, 115 & 116. R.S.L.D. DAG NOS. 27, 28, 29, 30, 31, 32, 33, 34, 35 & 48. POST OFFICE - PALAN HAT POLICE STATION - BISHNUPUR, WITHIN KULLERDARI GHAM PANCHAIET, DISTRICT - SOUTH CHHATTISGARH.

CONSULTANT:
 MN Consultants One Design Solutions
 Plot No. 15, Sector 17, Indira Nagar, Gurgaon-122001.
 Telephone: 01294188730
 Email: mncoo@msd.com
 Web: www.mncoo.com

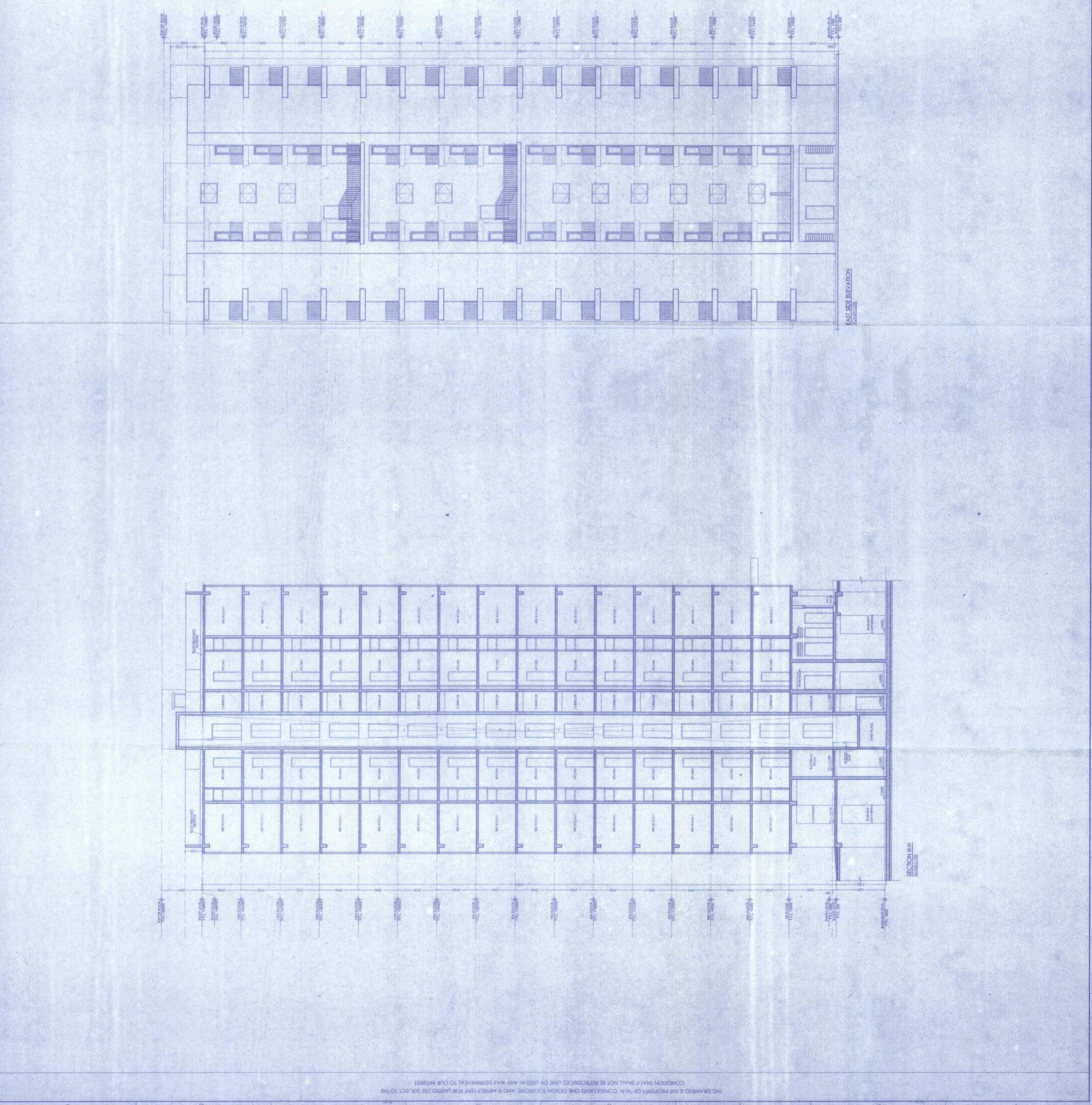
DATE: 18.03.2017
DRAWING TITLE: SECTION-H-H EAST ELEVATION

SCALE: 1/20
CHECKED: BISWAJIT
DRAWN: SOMDICEE
DESIGN DEVELOPMENT: Somdiecee
CONSTRUCTION Dwg: Somdiecee
REVISION No.: 1
REVISION DATE: 20.03.2018

PROJECT NO.: JKA-SD-25
DATE: 2016-2017/JKA



EAST ELEVATION
SECTION-H-H



SECTION-H-H
 ELEVATION

CONDITION THAT IF SHALL NOT BE REPRODUCED OR USED IN ANY MANNER WITHOUT THE WRITTEN PERMISSION OF OUR FIRM.
 THIS DRAWING IS THE PROPERTY OF M/N CONSULTANTS ONE DESIGN SOLUTIONS, AND IS HEREBY LOANED TO YOU SUBJECT TO THE CONDITION THAT IF SHALL NOT BE REPRODUCED OR USED IN ANY MANNER WITHOUT THE WRITTEN PERMISSION OF OUR FIRM.